

LSA Community Team March Meeting



MISSION: POSSIBLE

AGENTS OF CHANGE

Purpose of LSA Community Teams

- **Essential Agreements**

School Update

- **4th Quarter In-Person Learning**

Discussion Topic:

- **4th Quarter - Return to School (Plan B)
- Questions and Answers**

Share Community Team Announcements and Celebrations for School Newsletter



LSA Community Teams

Mission: Connect the Community

LSA Community Team Leader Role and Responsibilities:

Direct Contact and Community Representative - Available via school email address

Hosts and Facilitates Discussions - LSA Community Team meetings are held once per month online via Zoom for families to **Connect, Congregate, and Celebrate** by sharing feedback on topics impacting LSA

Provide School Information -Announce school events and encourage participation

Collect Team Announcements - Information will be shared in the school newsletter

Attend Head of School Meetings - Share questions, comments, and suggestions gathered from community meetings or email messages and convey responses

Meeting Essential Agreements



1. Be Courteous and Respectful of all Contributors
2. Maintain Confidentiality
3. Keep Comments Brief to Allow Others to Share
4. Turn Negatives Statements into Positive Suggestions
5. Enjoy Building Relationships - **Connect, Congregate, and Celebrate**

Together!

DRAFT

LSA In-Person Learning Requirements



3 W's - Wait, Wash Hands, Wear Masks

Group On Campus Schedule

4th 9 Weeks	Group On Campus	Monday	Tuesday	Wednesday	Thursday	Friday
Mar. 29 - Apr. 2	Spring Break	No School	No School	No School	No School	No School
Apr. 5 - 9	Intro. Week	No School	A - Group 1	B - Group 1	A - All Remote	B - All Remote
April 12 -16	Intro. Week	A -Group 2	B - Group 2	A - All Remote	B - Group 3	A - Group 3
Apr. 19 - 23	Group 1	B	A	B	A	B
Apr. 26 - 30	Group 2	A	B	A	B	No School
May 3 - 7	Group 3	A	B	A	B	A
May 10 - 14	Group 1	B	A	B	A	B
May 17 - 21	Group 2	A	B	A	B	A
May 24 - 28	Group 3	B	A	B	Review	Review
May 31 - Jun. 4	(EXAMS)	No School	1st & 2nd	3rd & 4th	5th & 6th	7th & 8th
Jun, 7 - 11	(EOCs)	Math III EOC	English II EOC	Math I EOC	Biology EOC	Make-up Exams

Approx. 50 students/group



Daily Schedule

7:45 to 8:30	-	Arrival Time	Students report to their 1st/5th Period Classroom
8:30 to 9:53	-	1st/5th Period	
9:53 to 9:56	-	Transition	Students are required to walk in line to next class
9:56 to 11:19	-	2nd/6th Period	
11:19 to 11:22	-	Transition	Students are required to walk in line outside for lunch
11:22 to 11:52	-	Lunch (30 mins)	Outside if weather permits, Inside in Gallery/Multi-Purpose Room
11:52 to 11:56	-	Transition	Students are required to walk in line to next class
11:56 to 1:19	-	3rd/7th Period	
1:19 to 1:22	-	Transition	Students are required to walk in line to next class
1:22 to 2:45	-	4th/8th Period	
2:45 to 3:30	-	Dismissal/Study Hall	All students who remain at school will report to the Gallery for Study Hall. All students must be off campus by 4:00.

Arrival

- Mask MUST be on properly before exiting vehicle.
- Health screening (temperature check and daily monitoring questions) before entering the building.
- Carpool drivers will be required to wait until their students have passed their health screening in the vehicle before leaving campus.



DO NOT ENTER IF YOU HAVE

• Fever > 100	• Nausea
• Chills	• Diarrhea
• Shortness of breath	• Cough
• Difficulty breathing	• Sore Throat
• Loss of taste/smell	Other non-allergy symptoms: • Headache • Congestion • Runny Nose



WEAR A MASK *required

- Visitors are required to wear a mask at all times.
This includes treatment rooms, patient rooms, waiting rooms.
- Patients may remove their mask in the room but should put it back on when staff enters the room.



PHYSICAL DISTANCE

- Wait at least 6 feet apart.
- Avoid close contact.



CLEAN YOUR HANDS

- Use soap and water and wash for at least 20 seconds OR use hand sanitizer.

1. Ask: Have you been diagnosed with COVID-19 since you were last at school?

☐ Yes

☐ No

• *If No, move on to Question 2.*

• *If Yes, say and ask: You cannot go to school. Does anyone else who lives with you also go to or work at this school?*

☐ Yes – *If Yes, say: Those individuals cannot go to school.*

☐ No

2. Ask: Have you had any of the following symptoms since you were last at school?

☐ Fever

☐ Chills

☐ Shortness of breath or difficulty breathing

☐ New cough

☐ New loss of taste or smell

• *If No, move on to Question 3.*

• *If Yes to at least one symptom on this list, say and ask: You cannot go to school. Does anyone else who lives with you also go to or work at this school?*

☐ Yes– *If Yes, say: Those individuals cannot go to school.*

☐ No

3. Ask: Have you had close contact (been within 6 feet of someone diagnosed with COVID-19 for a cumulative total of 15 minutes over a 24-hour period) in the last 14 days?

☐ Yes

☐ No

• *If No, move on to Question 4.*

• *If Yes, say: You cannot go to school.*

4. Ask: Has any health department staff or a health care provider been in contact with you and advised you to quarantine?

☐ Yes

☐ No

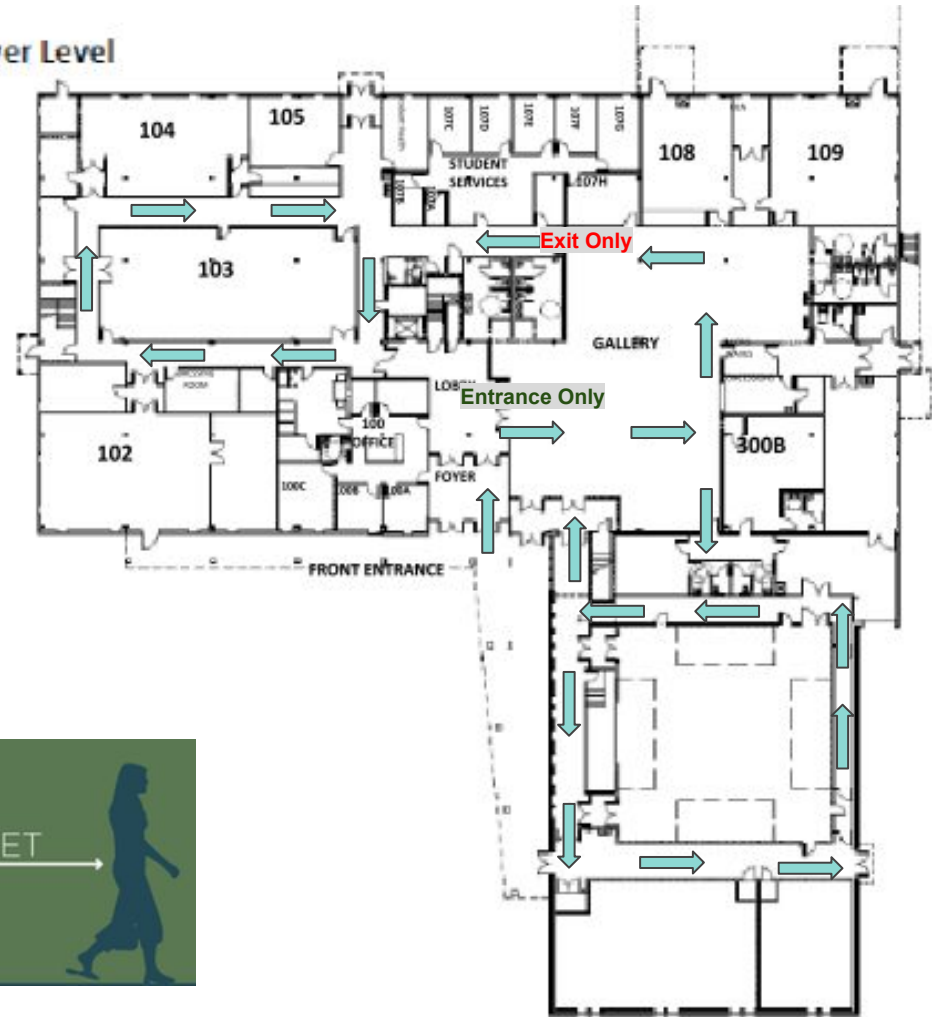
• *If No, say: You may go to school.*

• *If Yes, say: You cannot go to school.*

Hallways: Downstairs

Students and staff must walk in the direction of the floor markings, six feet apart.

Lower Level



Hallways: Upstairs

Students and staff must walk in the direction of the floor markings, six feet apart.



Upper Level



Restroom Rules

- Do NOT wait inside the restroom for a stall to become available. Wait **outside** the restroom socially distanced from others who may be waiting.
- Use only the open/unlocked stalls and the sinks that are open and not marked off.
- A Day Porter will be cleaning all high touch areas and refilling dispensers throughout the day.





Classroom In-Person

- Teachers will conduct class using the same Zoom format.
- Students in the building will also participate virtually.
- All desks will be 6 feet apart.
- Students MUST wait until all other students have exited the classroom before entering.
- Desks will need to be wiped down between classes.
- Student MUST have technology device charged and ready for learning.
- Teachers and students will remain 6 feet apart in the classroom.
- Doors will remain open for air circulation.





Lunch and Snacks

Students will eat Lunch Outside if weather permits, Inside in Gallery/Multi-Purpose Room:

- There will be no **Off Campus** lunch.
- There will be no food sales on campus, so students must bring their lunch each day.
- For health reasons, students will not be allowed to use refrigerators, microwaves or vending machines, so they should bring something that can be eaten cold.
- There will be no shared food in classes or during lunch. Students may only take off masks to eat or drink when they are outside.
- **NO TOUCHING, NO HUGGING, NO ELBOW BUMPS - ALL STUDENTS MUST BE SEATED 6 FEET APART!**





Departure

We ask that students be picked up or depart campus as soon as possible each day.

- Classes will end at 2:45.
- Students who need to remain on campus will attend Study Hall in the Gallery.
- Student drivers will be dismissed first, then all other students will be dismissed in small groups by last name.
- All students must be picked up or leave campus by 4:00 each day.

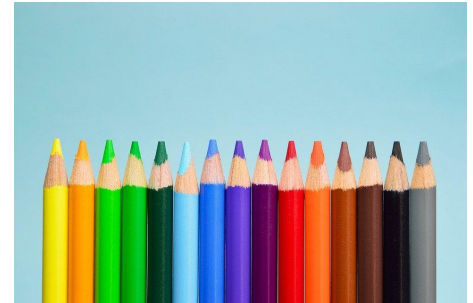




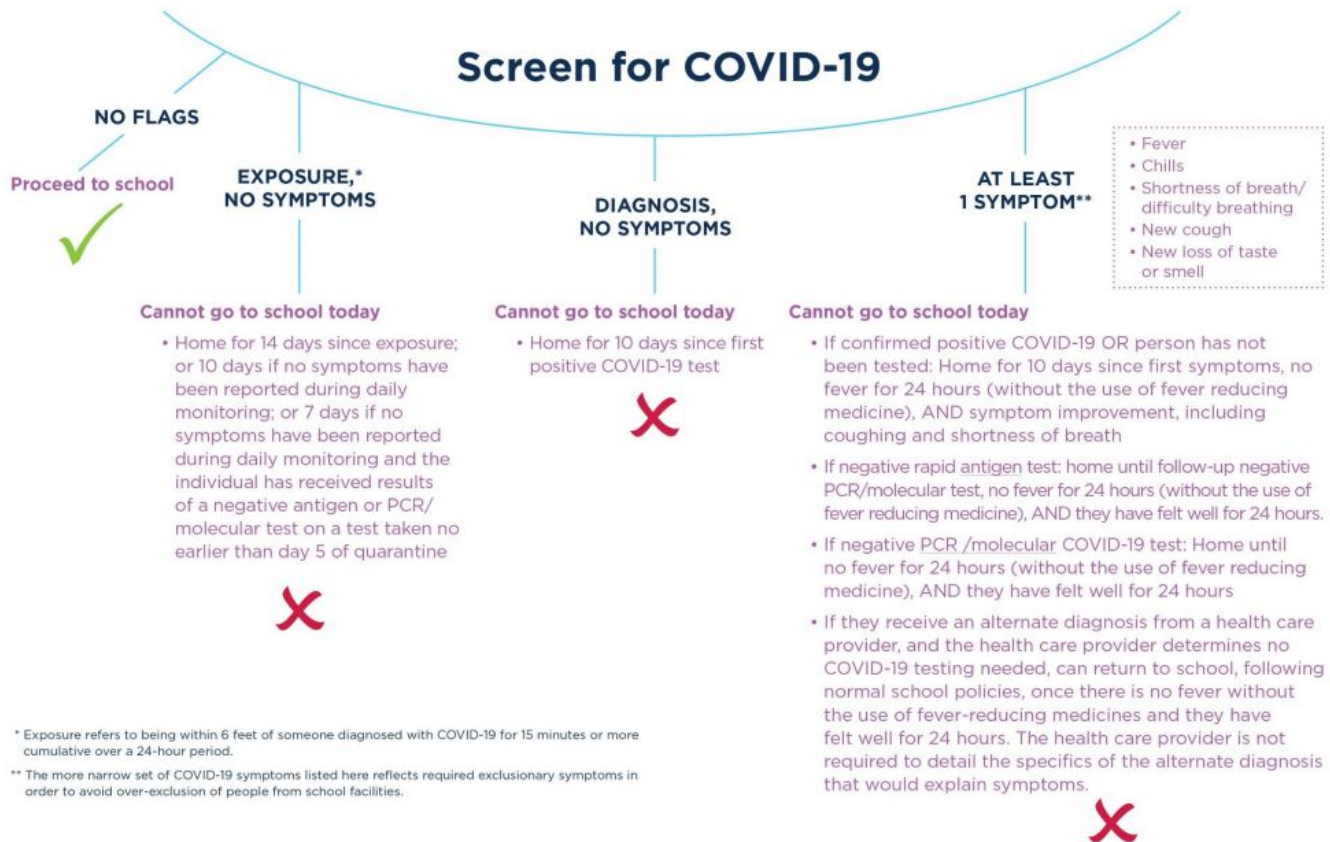
Clubs and After School Activities

- All clubs will continue to be held virtually.
- After School Activities are Reserved for the Arts.
- Tutoring - Must be arranged with the teacher.
- SGA Events - TBD

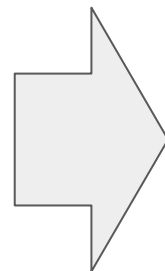
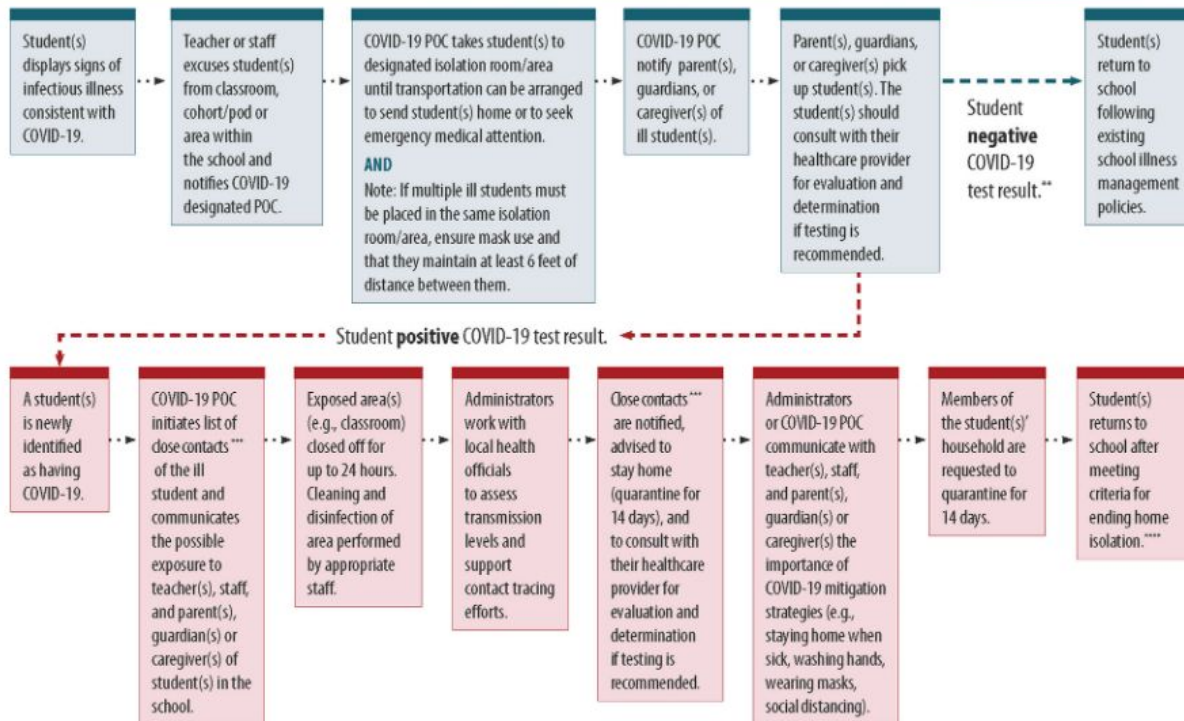
All students MUST be with a staff member if they are in the building after school!



Symptom Screening Flow Chart



WHAT TO DO IF A STUDENT BECOMES SICK AT SCHOOL OR REPORTS A NEW COVID-19 DIAGNOSIS*



Close contacts*** are notified, advised to stay home (quarantine for 14 days), and to consult with their healthcare provider for evaluation and determination if testing is recommended.



CS 210460-A August 11, 2020 11:18

Note: COVID-19 POC = the designated point of contact (a staff person that is responsible for responding to COVID-19 concerns, such as a nurse)

* Scenario based on geographic area with community transmission of SARS-CoV-2 the virus that causes COVID-19.

** With no known close contact

*** Close contact is defined as someone who was within 6 feet for a total of 15 minutes or more within 2 days prior to illness onset, regardless of whether the contact was wearing a mask.

**** Student can end home isolation after meeting all of the following three criteria: at least 10 days since symptoms appeared, at least 24 hours with no fever-reducing medication, and symptoms have improved.

cdc.gov/coronavirus

Returning from Exclusion

Exclusion Category	Scenario	Criteria to return to school
Diagnosis	Person has tested positive with an antigen test but does not have symptoms of COVID-19	<p>If the person takes a repeat PCR/molecular test performed in a laboratory within 24 – 48 hours of their positive antigen test, and that PCR/molecular test is negative: the positive antigen test can be considered a false positive and the person can immediately return to school; OR</p> <p>If the person does not take a repeat PCR/molecular test, or takes one within 24 – 48 hours and it is also positive, the person can return to school when they complete 10 days of isolation. Isolation should begin starting from the date of their first positive test.</p>
Diagnosis	Person has tested positive with a PCR/molecular test but the person does not have symptoms.	Person can return to school when they complete 10 days of isolation. Isolation should begin starting from the date of their first positive test.
Symptoms	Person has symptoms of COVID-19 and has tested positive with an antigen test or PCR/molecular test	<p>Person can return to school when</p> <ul style="list-style-type: none"> • The person completes 10 days of isolation. Isolation should begin starting from their first day of symptoms; AND • It has been at least 24 hours since the person had a fever (without using fever reducing medicine); AND • Other symptoms of COVID-19 are improving.
Symptoms	Person has symptoms of COVID-19 but has not been tested for COVID-19 nor has visited a health care provider. Therefore, the person who has symptoms is presumed positive.	<p>Person can return to school when</p> <ul style="list-style-type: none"> • The person completes 10 days of isolation. Isolation should begin starting from the first day of symptoms; AND • It has been at least 24 hours since the person had a fever (without using fever reducing medicine); AND • Other symptoms of COVID-19 are improving.
Symptoms	Person has symptoms of COVID-19 but has visited a health care provider and received an alternate diagnosis that would explain the symptoms of fever, chills, shortness of breath or difficulty breathing, new cough or new loss of taste or smell, and the health care provider has determined COVID-19 testing is not needed.	<p>Person can return to school when</p> <ul style="list-style-type: none"> • It has been at least 24 hours since the person had a fever (without using fever reducing medicine); AND • They have felt well for at least 24 hours. • Note: The health care provider is not required to detail the specifics of the alternate diagnosis.

Exposure	Person has been in close contact with someone with a confirmed case of COVID-19 .	<p>Person can return to school after completing up to 14 days of quarantine. The 14 days of quarantine begin after the last known close contact with the COVID-19 positive individual. Alternatively, the person may complete a 10-day quarantine if the person is not presenting symptoms of COVID-19 (e.g. loss of taste and/or smell) after daily at-home monitoring, or they may complete 7 days of quarantine if they report no symptoms during daily at-home monitoring, and the individual has received results of a negative antigen or PCR/molecular test on a test taken no earlier than day 5 of quarantine.</p> <p>If quarantine is discontinued before day 14, the individual must continue to monitor symptoms and strictly adhere to all non-pharmaceutical interventions (e.g. wear a mask, practice social distancing) through 14 days after the date of last exposure.</p>
Household Member, Exposure	Person is a household member (e.g. a sibling) of someone with a confirmed case of COVID-19 .	<p>Person can return to school after completing 14 days of quarantine, 10 days of quarantine if no symptoms are present in daily at-home monitoring, or 7 days of quarantine if no symptoms are present in daily at home monitoring and the individual has received results of a negative antigen or PCR/molecular test on a test taken no earlier than day 5 of quarantine.</p> <p>If unable to avoid further close contact with the person who is the confirmed case, quarantine begins at the end of a 10-day isolation of the person with COVID-19.</p> <p>If quarantine is discontinued before day 14, the individual must continue to monitor at home for symptoms and strictly adhere to all non-pharmaceutical interventions (e.g. wear a mask, practice social distancing) through 14 days after the date of last exposure.</p>
Household Member, Symptoms	Person is a household member (e.g. a sibling) of someone who has symptoms of COVID-19 but symptomatic person has not been tested for COVID-19, nor has visited a health care provider. Therefore, the person who has symptoms is presumed positive.	<p>Person can return to school after completing 14 days of quarantine, 10 days of quarantine if no symptoms are present in daily at home monitoring, or 7 days of quarantine if no symptoms are present in daily at home monitoring and individual has received results of a negative antigen or PCR/molecular test on a test taken no earlier than day 5 of quarantine. Since the presumption of COVID-19 is not ruled out through an alternative diagnosis, quarantine begins at the end of a 10-day isolation of the person with COVID-19 since that person may remain infectious for up to 10 days after symptom onset.</p> <p>If quarantine is discontinued before day 14, the individual must continue to monitor at home for symptoms and strictly adhere to all non-pharmaceutical interventions (e.g. wear a mask, practice social distancing) through 14 days after the date of last exposure.</p>
Household Member, Symptoms	Person is a household member (e.g. a sibling) of someone who has symptoms of COVID-19 but symptomatic person has visited a health care provider and received an alternate diagnosis that would explain the symptoms of fever, chills, shortness of breath or difficulty breathing, new cough or new loss of taste or smell, and the health care provider has determined COVID-19 testing is not needed.	<p>Person can return to school when symptomatic household member receives their alternate diagnosis.</p> <p>Note: The health care provider is not required to detail the specifics of the alternate diagnosis.</p>



Consequences

In an effort to keep everyone safe, all rules must be followed by all students.

X - 1st Incident - Warning

X - 2nd Incident - Parent/Guardian, Student, and Head of School Meeting

X - 3rd Incident - Assigned to Remote Learning

South Cary Next Community Team Meeting

Wednesday - April 21@ 7pm



2020/21 Calendar

July 2020						
Su	Mo	Tu	We	Th	Fr	Sa
			1	2	3	4
5	6	7	8	9	10	11
12	13	14	15	16	17	18
19	20	21	22	23	24	25
26	27	28	29	30	31	

August 2020						
Su	Mo	Tu	We	Th	Fr	Sa
						1
2	3	4	5	6	7	8
9	10	11	12	13	14	15
16	17	18	19	20	21	22
23	24	25	26	27	28	29
30	31					

September 2020						
Su	Mo	Tu	We	Th	Fr	Sa
		1	2	3	4	5
6	7	8	9	10	11	12
13	14	15	16	17	18	19
20	21	22	23	24	25	26
27	28	29	30			

October 2020						
Su	Mo	Tu	We	Th	Fr	Sa
				1	2	3
4	5	6	7	8	9	10
11	12	13	14	15	16	17
18	19	20	21	22	23	24
25	26	27	28	29	30	31

November 2020						
Su	Mo	Tu	We	Th	Fr	Sa
1	2	3	4	5	6	7
8	9	10	11	12	13	14
15	16	17	18	19	20	21
22	23	24	25	26	27	28
29	30					

December 2020						
Su	Mo	Tu	We	Th	Fr	Sa
		1	2	3	4	5
6	7	8	9	10	11	12
13	14	15	16	17	18	19
20	21	22	23	24	25	26
27	28	29	30	31		

January 2021						
Su	Mo	Tu	We	Th	Fr	Sa
					1	2
3	4	5	6	7	8	9
10	11	12	13	14	15	16
17	18	19	20	21	22	23
24	25	26	27	28	29	30
31						

February 2021						
Su	Mo	Tu	We	Th	Fr	Sa
	1	2	3	4	5	6
7	8	9	10	11	12	13
14	15	16	17	18	19	20
21	22	23	24	25	26	27
28						

March 2021						
Su	Mo	Tu	We	Th	Fr	Sa
	1	2	3	4	5	6
7	8	9	10	11	12	13
14	15	16	17	18	19	20
21	22	23	24	25	26	27
28	29	30	31			

April 2021						
Su	Mo	Tu	We	Th	Fr	Sa
				1	2	3
4	5	6	7	8	9	10
11	12	13	14	15	16	17
18	19	20	21	22	23	24
25	26	27	28	29	30	

May 2021						
Su	Mo	Tu	We	Th	Fr	Sa
						1
2	3	4	5	6	7	8
9	10	11	12	13	14	15
16	17	18	19	20	21	22
23	24	25	26	27	28	29
30	31					

June 2021						
Su	Mo	Tu	We	Th	Fr	Sa
		1	2	3	4	5
6	7	8	9	10	11	12
13	14	15	16	17	18	19
20	21	22	23	24	25	26
27	28	29	30			

Weather Make Up Days

Qtr 1	10/5, 10/1, 10/2
Qtr 2	11/23, 11/24, 11/30
Qtr 3	2/15, 3/3, 3/4, 3/5
Qtr 4	4/5, 4/30
Days will be made up in the order listed for any days missed during that quarter	

Holiday/Vacation
First/Last day
Exams
Teacher workday
last day of the quarter
community service day