

# LSA Community Team December



**MISSION: POSSIBLE**  
*AGENTS / OF / CHANGE*

Hello and welcome to the December meeting of the North Raleigh section of Longleaf's Community Teams.

My name's Laura Chapman. I have a 10th grader who is new to Longleaf this year. She likes drawing and creative writing.

## **Purpose of LSA Community Teams**

- **Essential Agreements**

## **Introduction Activity**

- **Wish List for 2nd Semester**

## **Discussion Topic: What to Consider**

- **Second Semester – Social Interactions and School**

## **What Goes Into the Re-opening Plan Decision?**

## **Takeaways from Oct/Nov Meeting**

## **Ways to Meet Other Students**

## **Service Requirement Update (from Oct)**

## **Share Community Team Announcements and Celebrations for School Newsletter**



Here is our agenda for this month.

We start with a reminder of the purpose of our monthly community team meetings.

Then we'll go over the meeting ground rules and have a brief activity involving thinking of items for a 2nd semester wish list.

Our discussion topic this month is student social interactions and school, and what considerations go into decisions involving this.

Then I have a quick explanation of how Ms Williams researches her recommendation for Lingleaf's re-opening plan.

We have a few takeaways from this and the past few months' meetings, ideas for how your student can meet other students, and an update to community service requirements that I have mentioned before but feel is worth mentioning again.

At the end of the meeting I will ask for any good news you might want to share with our school community.

# LSA Community Teams - What Are They?

## Mission: Connect the Community

### LSA Community Team Leader Role and Responsibilities:

**Direct Contact and Community Representative** - Available via school email address:

[laura.chapman@longleafschool.com](mailto:laura.chapman@longleafschool.com)

**Hosts and Facilitates Discussions** - LSA Community Team meetings are held once per month online via Zoom for families to **Connect, Congregate, and Celebrate** by sharing feedback on topics impacting LSA

**Attend Head of School Meetings** - Share questions, comments, and suggestions gathered from community meetings or email messages and convey responses

**Provide School Information** - Announce school events and encourage participation

**Collect Team Announcements** - Information will be shared in weekly school emails

Community teams are smaller group meetings that are a nice way to welcome families into a smaller setting in order to discuss concerns, pass along information, and just get to know each other, since we can't get together in person.

I am one of 10 school representatives and you can contact me at this email.

I will be one of your monthly meeting hosts and will share with you information from Ms Williams and lead a discussion about this information with everyone's input welcome.

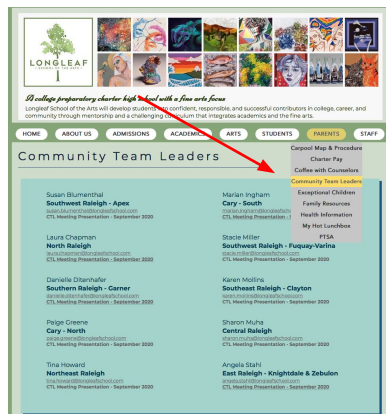
Every month I attend a meeting with Ms Williams to go over the information she would like me to share during my meeting with you.

At this point I will update her about any celebrations that families would like to share with the school community, and I can also pass along suggestions from those that attend the meeting.

# Community Team Meeting Dates

My Zoom meetings will be on Tuesdays at 6:30pm:

01/26	04/13
02/09	05/11
03/16	06/08



[www.longleafschool.com](http://www.longleafschool.com)

## 2020/21 Calendar

July 2020							August 2020							September 2020						
Su	Mo	Tu	We	Th	Fr	Sa	Su	Mo	Tu	We	Th	Fr	Sa	Su	Mo	Tu	We	Th	Fr	Sa
				1	2	3											1	2	3	4
5	6	7	8	9	10	11	2	3	4	5	6	7	8	6		8	9	10	11	12
12	13	14	15	16	17	18	9	10	11	12	13	14	15	13	14	15	16	17	18	19
19	20	21	22	23	24	25	16	17	18	19	20	21	22	20	21	22	23	24	25	26
26	27	28	29	30	31		23	24	25	26	27	28	29	27	28	29	30			
							30	31												

October 2020							November 2020							December 2020						
Su	Mo	Tu	We	Th	Fr	Sa	Su	Mo	Tu	We	Th	Fr	Sa	Su	Mo	Tu	We	Th	Fr	Sa
							1	2	3	4	5	6	7				1	2	3	4
4	5	6	7	8	9	10	8	9	10	11	12	13	14	6	7	8	9	10	11	12
11	12	13	14	15	16	17	15	16	17	18	19	20	21	13	14	15	16	17	18	19
18	19	20	21	22	23	24	22	23	24	25	26	27	28	20	21	22	23	24	25	26
25	26	27	28	29	30	31	29	30						27	28	29	30	31		

January 2021							February 2021							March 2021						
Su	Mo	Tu	We	Th	Fr	Sa	Su	Mo	Tu	We	Th	Fr	Sa	Su	Mo	Tu	We	Th	Fr	Sa
						2	1	2	3	4	5	6					1	2	3	4
3	4	5	6	7	8	9	7	8	9	10	11	12	13	7	8	9	10	11	12	13
10	11	12	13	14	15	16	14	15	16	17	18	19	20	14	15	16	17	18	19	20
17	18	19	20	21	22	23	21	22	23	24	25	26	27	21	22	23	24	25	26	27
24	25	26	27	28	29	30	28							28	29	30	31			

April 2021							May 2021							June 2021						
Su	Mo	Tu	We	Th	Fr	Sa	Su	Mo	Tu	We	Th	Fr	Sa	Su	Mo	Tu	We	Th	Fr	Sa
																	1	2	3	4
4	5	6	7	8	9	10	2	3	4	5	6	7	8	6	7	8	9	10	11	12
11	12	13	14	15	16	17	9	10	11	12	13	14	15	13	14	15	16	17	18	19
18	19	20	21	22	23	24	16	17	18	19	20	21	22	20	21	22	23	24	25	26
25	26	27	28	29	30		23	24	25	26	27	28	29	27	28	29	30			

### Weather Make Up Days

Qtr 1	1/25, 1/27, 1/28
Qtr 2	11/23, 11/24, 11/30
Qtr 3	2/15, 3/3, 3/4, 3/5
Qtr 4	4/5, 4/30

Days will be made up in the order listed for any days missed during that quarter.

Professional Development
Fieldwork
Exams
Release Workday
Last day of the quarter
Community Service Day

The monthly Community Team meetings are held via Zoom during the 2nd-3rd week of each month. My meetings are for the North Raleigh section of the Longleaf community.

A Zoom link will be emailed out to everyone prior to the meeting, and I believe there will eventually also be a link provided on the Community Team webpage that you can just click to join. This webpage is also where you can find the presentations from past months. From the Home page, click the Parents tab and you will see Community Team Leaders.

As a reminder, there will be 10 sessions held each month by each of us 10 community leaders. You can attend whichever meeting fits into your schedule. You don't have to attend the one that corresponds to where you live.

# Meeting Essential Agreements

1. Be Courteous and Respectful of all Contributors
2. Maintain Confidentiality
3. Keep Comments Brief to Allow Others to Share
4. Turn Negative Statements into Positive Suggestions
5. Enjoy Building Relationships - **Connect, Congregate, and Celebrate** Together!

Essential agreements are just the ground rules for our meetings: basically, be respectful, be helpful, be positive, and let's enjoy getting to know each other better.

# Introduction Activity

2020 - 2021 School Theme - **MISSION POSSIBLE: AGENTS OF CHANGE**

The entire LSA Community is on a mission to be leaders of all of the changes impacting education this school year! We will prove that as a united team our school can be a model for all other schools in the state of North Carolina! Instead of allowing the changes to negatively impact LSA, we will proactively face challenges by taking charge of our journey as Agents of Change!

Your TEAM Mission: 'Tis the Season - Create a wishlist for the LSA Community for 2nd semester

The LSA school community is on a mission this year to be positive Agents of Change, which I take to mean that we will try to take less-than-desirable circumstances and try to make something positive out of them.

Our activity this month is to come up with a wish list of what your student might want to see happen next semester.

What we come up with will be shared with Ms Williams at my next monthly meeting with her as she thinks about ways to involve students with each other and with the school without being able to have large in-person events.

You can write in the chat or use your mic.

I will confess I can't think of any ideas because my student is new and has no friend group at Longleaf.

She's also a loner and is not at all wanting to go out in public to meet others.

So I feel that I am a poor choice to lead a discussion about social interaction during a pandemic but there you have it.

I'm hoping others will have some ideas?

# Wishlist Chart



## List Needs

- Need teachers to please recognize that students are suffering from "Zoom fatigue;" consider not punishing with a zero a student's first missed assignment (very demoralizing for the student)
- Need more breaks during the day
- More consistency from all teachers in not requiring students to be on Zoom 100% of class time

## List Wants

- Can teachers utilize small advisory groups on Zoom so students can get to know each other? Vs whole-class Zoom meetings.

So here I'd say the aim is to differentiate between wants and needs. I suppose that's relative, depending on how your student is doing these days.

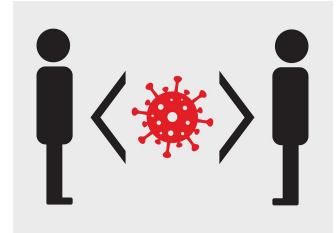
# Topic: Second Semester - Social Interaction and School

Monitoring of Social  
Distancing

Camera Costs

Online Instruction vs  
In-Person

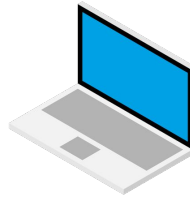
Health



*Will be very hard  
to ensure social  
distance with  
class changes*

*Feasibility of using chromebook  
camera in some classes in lieu of  
buying/installing separate camera?*

*Cost/availability of substitute  
teachers to cover for LSA staff  
who need to stay remote?*

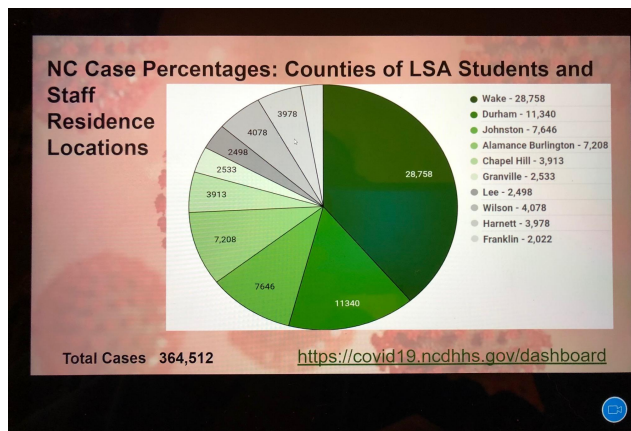
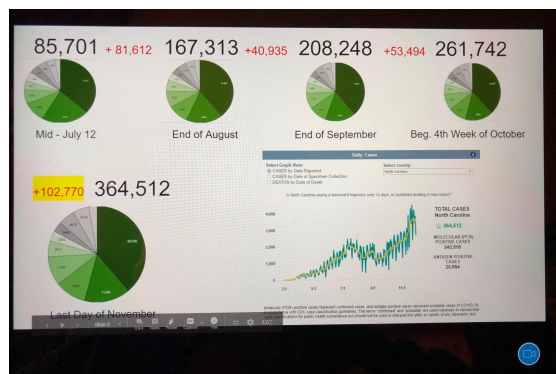


Does anyone have any comments about what you see listed here, or have anything to add?



# What goes into the Reopening Plan Decision?

[covid19.ncdhhs.gov/dashboard](https://covid19.ncdhhs.gov/dashboard)



Tracking total case numbers and those in the counties of LSA's students & staff

If you come to the Board meetings Ms Williams presents data that support her re-opening plan recommendation.

She gathers her data from several sources and puts them together to make the data relevant to Longleaf.

Here are slides she presented at the Nov board meeting.

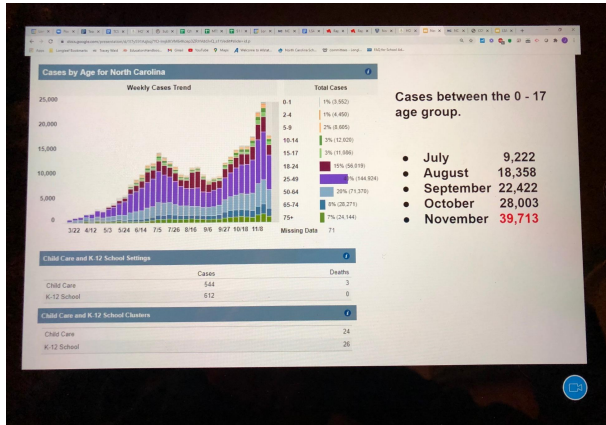
On the left is data from the NC Covid Dashboard showing how case percentages change among Longleaf counties as the months go by.

You can see the total case numbers going up but the percentages in each county staying relatively the same.

On the right is the Nov pie chart with all the numbers clearly visible.

# NC DHHS Covid info and CDC advice for schools to consider as they evaluate reopening

[covid19.ncdhhs.gov/dashboard](https://covid19.ncdhhs.gov/dashboard)



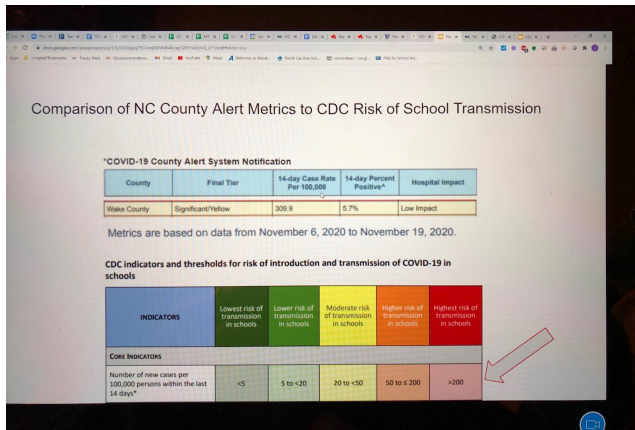
CDC indicators and thresholds for risk of introduction and transmission of COVID-19 in schools

INDICATORS	Lowest risk of transmission in schools	Lower risk of transmission in schools	Moderate risk of transmission in schools	Higher risk of transmission in schools	Highest risk of transmission in schools
CORE INDICATORS					
Number of new cases per 100,000 persons within the last 14 days*	<5	5 to <20	20 to <50	50 to <200	>200
Percentage of RT-PCR tests that are positive during the last 14 days**	<3%	3% to <5%	5% to <8%	8% to <10%	>10%
Ability of the school to implement 5 key mitigation strategies:					
<ul style="list-style-type: none"> <li>Consistent and correct use of masks</li> <li>Social distancing to the largest extent possible</li> <li>Hand hygiene and respiratory etiquette</li> <li>Cleaning and disinfection</li> <li>Contact tracing in collaboration with local health department</li> </ul> Schools should adopt the additional mitigation measures outlined below to the extent possible, practical and feasible.	Implemented all 5 strategies correctly and consistently	Implemented all 5 strategies correctly but inconsistently	Implemented 3-4 strategies correctly and consistently	Implemented 1-2 strategies correctly and consistently	Implemented no strategies

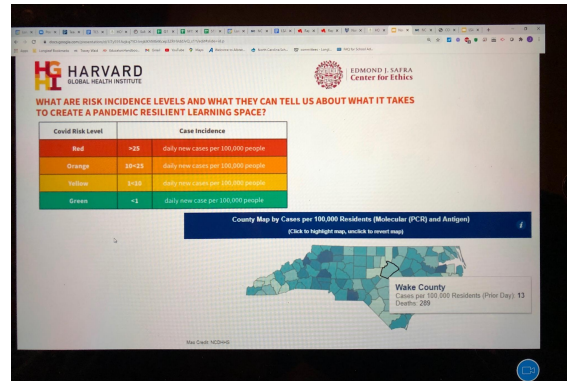
<https://www.cdc.gov/coronavirus/2019-ncov/community/schools-childcare/indicators.html#thresholds>

Here again on the left is the NC Covid dashboard, and on the right is a chart from the CDC to help assess transmission risk in schools.

## Comparing Wake County to CDC Recommendations



The “highest risk of transmission” category is a 14-day new case number of >200, and Wake County’s was 309.9 as of Nov 19 (it’s now 577)



Comparing advice from the Harvard Global Health Institute with info from the NC DHHS Covid Dashboard

[globalhealth.harvard.edu](https://globalhealth.harvard.edu)

On the left, as of Nov 19, the Wake County 14-day new case number was 309.9. Compare that to the CDC chart that indicated highest transmission risk when that number is over 200.

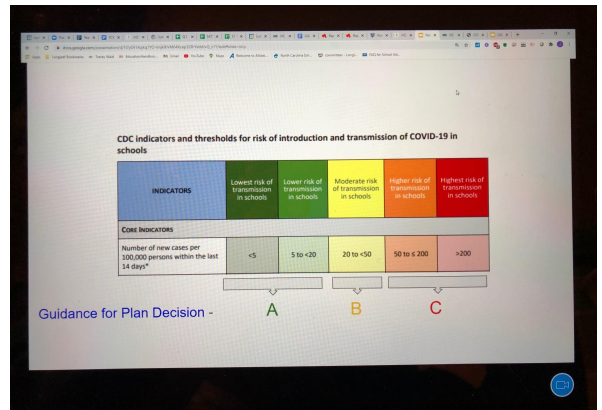
As of Dec 13, the Wake County number is 577.

On the right is a risk chart developed by the Harvard Global Health Institute.

Here Ms Williams is comparing the risk levels to the interactive county map provided by the NC Covid Dashboard.

Risk Levels	Strategy for Pandemic Resilient Teaching and Learning
Red	Stay-at-home orders in place; all learning remote for all learners; districts, states, and federal government invests in remote learning.
Orange	<p>1<sup>st</sup> priority for re-opening: Grades preK-5 and in-person special education services at grade levels preK-8 open if conditions for pandemic resilient teaching and learning spaces can be achieved at scale; districts, states, and federal government invest in healthy buildings and healthy classrooms; in the absence of conditions for pandemic resilient teaching and learning spaces, schools continue with remote learning.</p> <p>2<sup>nd</sup> priority for re-opening: Grades 6-8 and in-person special education services at grade levels 9-12 open if conditions for pandemic resilient teaching and learning spaces can be achieved at scale; districts, states, and federal government invest in healthy buildings and healthy classrooms; in the absence of conditions for pandemic resilient teaching and learning spaces, schools continue with remote learning.</p> <p>Not a priority for re-opening: Grades 9-12 maintain remote learning for all learners; districts, states, and federal government invest in remote learning.</p>
Yellow	<p>1<sup>st</sup> priority for re-opening: Grades preK-5 and in-person special education services at grade levels preK-8 open if conditions for pandemic resilient teaching and learning spaces can be achieved at scale; districts, states, and federal government invest in healthy buildings and healthy classrooms; in the absence of conditions for pandemic resilient teaching and learning spaces, schools continue with remote learning.</p> <p>2<sup>nd</sup> priority for re-opening: Grades 6-8 and in-person special education services at grade levels 9-12 open if conditions for pandemic resilient teaching and learning spaces can be achieved at scale; districts, states, and federal government invest in healthy buildings and healthy classrooms; in the absence of conditions for pandemic resilient teaching and learning spaces, schools continue with remote learning. In-person opportunities for special needs students at grade-levels preK-8 are also included.</p> <p>3<sup>rd</sup> priority for re-opening: If sufficient pandemic resilient learning space is available AFTER allocation to K-8, grades 9-12 open on a hybrid schedule, with only a subset of students on campus at any particular point of time to facilitate de-densification; districts, states, and federal government invest in healthy buildings and healthy classrooms AND in remote learning.</p>
Green	All schools open if conditions for pandemic resilient teaching and learning spaces can be achieved at scale; districts, states, and federal government invest in healthy buildings and healthy classrooms

This helps schools determine priorities based on community spread - right now Wake County is in the orange, where Grades 9-12 are "not a priority for re-opening"



From the CDC Covid website, here are the 14-day new case numbers correlated to NC Reopening Plans A, B, & C

This is the full Harvard risk chart on the left, and on the right Ms Williams has indicated where NC's re-opening plans fall against the CDC transmission risk chart, for easier comparison.

## LSA Covid-19 Scale for Metrics Formula

Instructional Plan	Value Score	Mitigating Factors
<b>Plan A</b> (In-Person Instruction)	<b>3</b>	State approval, 95% staff availability
<b>Plan B</b> (Blended Instruction)	<b>1.26 - 2.9</b>	State approval, 80% staff availability
<b>Plan C</b> (Remote Instruction)	<b>&lt;1.25</b>	N/A

Ms Williams has created a group that includes other local charter high schools so that the Heads of School can share information and develop metrics to determine a path forward once schools re-open in person.

In their first meeting last Friday the group created this scale to help them determine when it's appropriate to switch between remote and in-person learning.

There is a formula they created to come up with the "Value Score."

	Normal Level Plans A and B	Alert Plan B	High Alert Plan C
Description	Identified Cases are rare and transmission controlled	Moderate number of cases with most from a known source	Many Cases including community spread with some undetected cases
Value	3	2	1
Covid-19 County Alert System: Wake County	Significant	Substantial	Critical
CDC Positivity Rate: 14 Day - cases per 100,000 residents	<5 to <20	20 to <50	50 to 200+
Harvard Global Health Metrics - daily new cases Per 100,000 residents	<1	1 to <10	10+
LSA Stakeholder Data: Percentage of students and staff in quarantine, symptomatic, or positive.	<3%	3% to 5%	>5%
<div> County Alert System + Harvard Global Health Metrics + CDC Positivity Rate*2 + LSA Stakeholder Data*2 </div> <div>6</div>			

Here is the formula at the bottom. The chart shows the requirements for each plan level.

I believe Ms Williams plans to put some information about this on the Longleaf website.

# Ways To Meet Students & Make Friends While Remote

Full credit to Danielle D, our Garner Community Team Leader!

- Attend the Community Team Leader meetings. You can connect with other parents and see if anyone is interested in in-person or Zoom study groups.
- Have your student sign up for English or Math tutoring - that is a way to study and meet new faces. You don't have to be struggling to attend. Have your student check the school-wide Google Classroom for where to sign up.
- Has your student joined any student groups? The list of clubs is in that same Google Classroom. They can ask fellow group members to study with.
- If your student is in their 1st year at LSA, they are automatically enrolled in a Mentor program - they can use those mentors for help, too! (Danielle's student is one of the Mentors and he wishes people would participate more).
- Your student can also post in the Google Classroom for each class and ask for study buddies. Most classes have the Chat option on for the Zoom calls so they can post in the Chat that they are wanting to get together. They can also private message the teacher and the teacher can announce that someone is interested in studying and that they are gathering a list of interested students, etc.
- For parents - join the Longleaf School of the Art Families private Facebook group to connect with other parents.

The next few slides are from earlier presentations but are still relevant information. Ideas that Team Leader Danielle shared with one of her parent attendees.

## Takeaways from Oct/Nov - good for December, too!

Please participate in school functions and meetings, and by answering school and teacher surveys, emails, and other communications.

Do not hesitate to contact your student's teacher or counselor for advice, or if you have questions. Emails are available on the school website, on the left where it says [Staff Directory](#).

Utilize the school website for information, such as links to Coffee with Counselors, Community Team meetings, and [Board](#) meetings. Teachers' tutoring hours can be found under the [Academics](#) tab (choose [2020-21 Tutoring Hours](#)). Also check out the [Students](#) and [Parents](#) tabs to see what is available.

**\*\* Please take a few minutes to send your student's teachers and counselor a Thank You email for all the hard work they have been doing to make this difficult year as successful as possible. \*\***

[longleafschool.com](http://longleafschool.com)

This slide is from past months and I think it is worth mentioning again - takeaways from Community Team meetings.

Please involve yourself as much as you can in school events. ESPECIALLY any surveys! Make your voice heard so that your viewpoint is considered. And with Zoom being the preferred meeting method these days, it's even easier to attend. I attend the Board meeting every month, so I can hear information and discussions firsthand and understand why certain decisions are made.

Please make sure to contact your teachers or the school counselors if you have questions or need help resolving a problem. If staff don't know you need help they cannot provide it.

Keep in mind there is a lot of information available on the school website, including presentations from these Community Team meetings and from the monthly Coffee with Counselors meetings, as well as Board meeting information if you weren't able to attend.

Finally, as we head into the holidays please take a few minutes to send a few emails thanking Longleaf teachers, counselors, and staff for all the hard work they have put into teaching our kids this year. As you just saw, Ms Williams as well works very hard to make the best decisions she can for our school while trying to balance student and staff safety as well as academic, social, and mental health needs. It's a lot!



# 2020-2021 Revised Community Service Requirements/Ideas

Community Service is the act of helping others in a time of need. The situation in which we find ourselves provides us with an opportunity to show how we respond in the LSA Way: A creative, rigorous, authentic community of learners. If you have not met your community service requirement to participate in our graduation ceremony, it will take rigor (putting in the effort), authenticity (realizing this is a time where community service is as crucial as ever) and creativity (the easy routes are not currently available).

We have come up with projects you can undertake for your service. We will reduce everyone's community service hours requirement by 3 hours. Counselors are available to consult with students who need hours individually on how to plan their project and how many hours their project(s) will cover.

Here are some examples for you to consider:

1) Encouraging emails or videos (playing music, singing, dancing, etc) to local people or professionals who are affected by the Coronavirus pandemic. You cannot simply use the same message over and over and not personalize it. Students will document the amount of time spent researching and contacting the agency and preparing/sending the messages. Researching and making contact with the agency will take time. You'll need to make personal contact by phone and provide Mrs. Winters' contact information to verify this is a school project. Examples of agencies to consider:

Nursing Home

Senior Living Community

Hospital Departments (Patients, Staff)

Police and Fire Departments

Other Emergency Agencies such as the Red Cross

If the agency has a protocol in place for receiving paper copies of letters, notes or pictures, this may earn more time.

2) Adopting an elementary or middle school class and supporting the teacher by reading to the class, tutoring or other teacher requests.

4) Complete yard work, painting or other outdoor projects for neighbors or family in need due to a disability or due to a difficult situation resulting from COVID-19. Our typical policy is that community service must be completed through a non-profit organization. However, these are not typical times. People are facing different challenges. We are not encouraging students going into crowds or groups of any kind. But, you may call or email a neighbor or family member and ask what projects you can do for them. A picture is required for documentation.

5) Make Face Masks to Donate - be sure you follow guidelines [How to Donate Face Masks](https://www.vumc.org/coronavirus/how-donate-hand-sewn-face-masks) (<https://www.vumc.org/coronavirus/how-donate-hand-sewn-face-masks>)

6) Make Blankets to donate to hospitals, nursing homes or shelters or make socks for shelters. Contact an organization first to determine what they generally need.

7) Visit people via video chat in Nursing Homes, Senior Centers or who live alone. Ask them to tell you about their lives and what the Pandemic reminds them of. Ask them about their families and friends. The staff are probably getting adept at using these tools.

8) For the same groups, offer to organize and host a Bingo Night, TikTok party or other fun activity with them virtually.

9) Research and plan a community project (you don't have to implement it, but it should be something that could be implemented and is needed). For instance, a community garden, a butterfly garden, a Honey Bee project, etc. Contact your local town agency to find out about needs in your area.

10) Come up with your own idea and submit it to your counselor. Here's a list of examples that might help you come up with your own idea that you can create from home! [Community Service Projects](https://blog.prepscholar.com/129-examples-of-community-service-projects) (<https://blog.prepscholar.com/129-examples-of-community-service-projects>)

This slide is from previous meetings also but is worth mentioning again. Don't forget about the annual community service requirement for your student. This year because of the pandemic the hours have been reduced from 10 to 7.

This email from the counselors includes several ideas for activities that involve less person-to-person contact. It will be available on the school website under my name on the Community Team Leader webpage, in the Oct, Nov, and Dec presentations, so you can read all the fine print.

The community service form your student will need to record any service performed can be found on the school website under the Students tab. Click on Community Service. The completed form can be scanned or photographed and emailed to your student's counselor.

## Announcements and Celebrations

Please share anything you would like announced to the entire school community in the next weekly email.



Email me!

[laura.chapman@longleafschool.com](mailto:laura.chapman@longleafschool.com)

Next meeting is **Tuesday, Jan 26**, at 6:30!

And that brings us to the final part of our December meeting. If anyone has an announcement to share with the Longleaf community, please email that to me at any time. You can also email any discussion topics you'd like to see in future meetings, or any suggestions you have about the meetings. Don't forget that my next meeting is Tuesday, Jan 26, at 6:30pm. Thank you so much for attending and offering your comments and suggestions.